



Infinite  
Playgrounds

# WANSTEAD PARK PLAYGROUND DESIGN PROPOSAL

Intellectual property and design  
©Infinite Playgrounds



# WANSTEAD PARK PLAYGROUND DESIGN PLAN

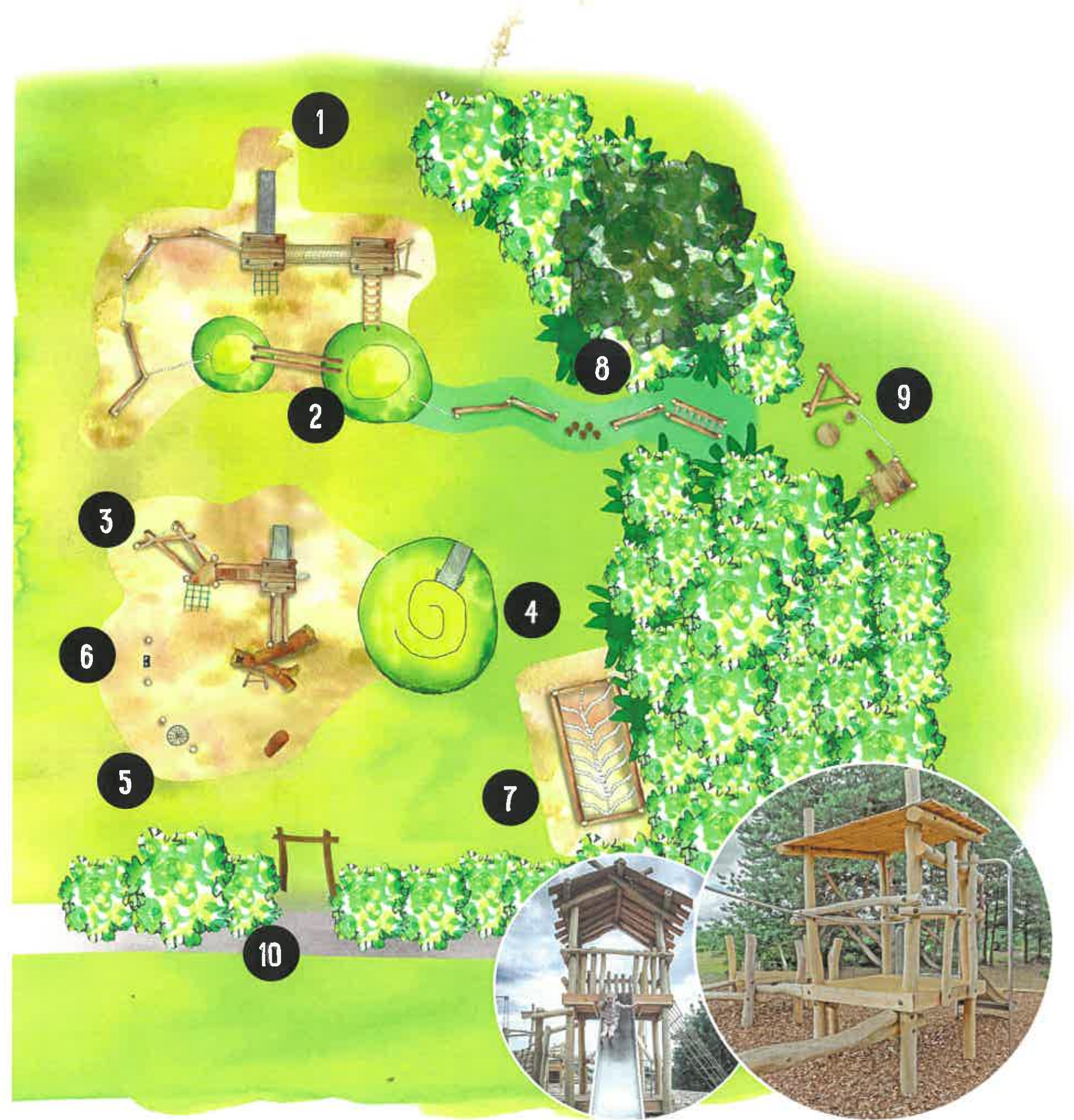
This plan indicates our approach to the design for your playspace at Wanstead Park.

The design offers distinct zones with a variety of stimulating challenges to create opportunities for children to develop physical, social and emotional skills through exploration and interaction.

We have thought carefully about how children will move and be supervised throughout the space and created exciting routes and links between zones. All elements are designed to be robust and hard wearing while complementing and reflecting the natural environment.

- 1 Natural climbing (for older children)
- 2 Play hills
- 3 Natural climbing (for younger children)
- 4 Spiral play hill with social slide
- 5 Basket swing
- 6 Cradle swing
- 7 Pendulum swing
- 8 Balance trail
- 9 Tree lab
- 10 Entrance archway

 Pathway *Existing surface	 Play Chip
 Grass *Existing surface	 Rubber Mulch

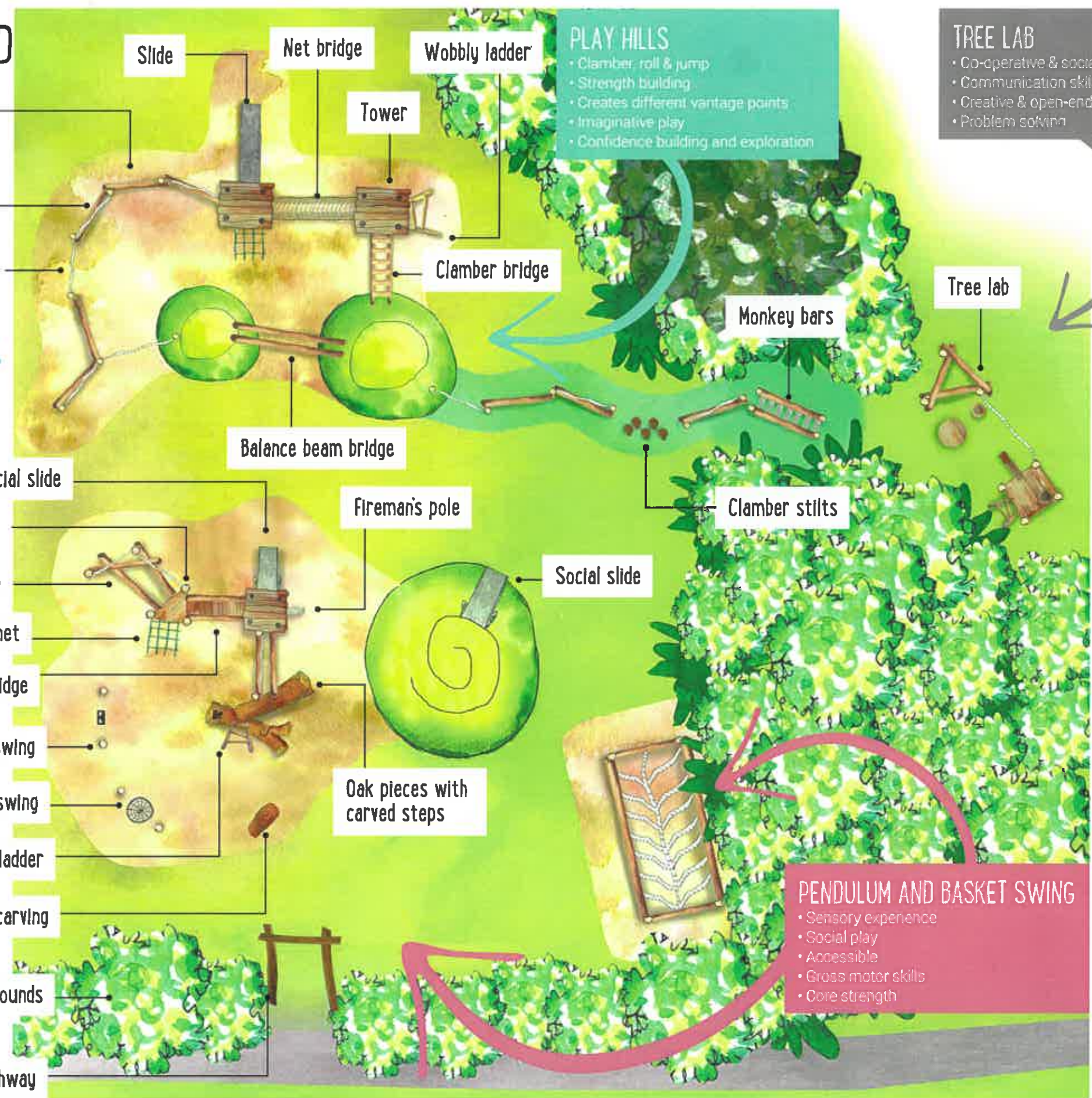


# WANSTEAD PARK PLAYGROUND PLAY VALUE

## NATURAL CLIMBING

- Develops balance & coordination
- Improves fitness
- Confidence building
- Core strength
- Problem solving
- Cooperative & social play
- Physical challenge
- Fine & gross motor skills
- Risk management

- Balance beam
- Balance beam with overhead rope
- Rope walk
- Social slide
- Triangular platform
- Scramble beams
- Clamber net
- Decked bridge
- Cradle swing
- Basket swing
- Wobbly ladder
- Large monkey carving
- Entrance mounds
- Entrance archway



**PLAY HILLS**

- Clamber, roll & jump
- Strength building
- Creates different vantage points
- Imaginative play
- Confidence building and exploration

**TREE LAB**

- Co-operative & social play
- Communication skills
- Creative & open-ended play
- Problem solving

**PENDULUM AND BASKET SWING**

- Sensory experience
- Social play
- Accessible
- Gross motor skills
- Core strength

# NATURAL CLIMBING



Net bridge



Tower with clamber net



Tower with slide

## Climbing Structure for Older Children

The natural shapes of robinia trunks and branches will create a unique structure featuring:

- Two raised towers with larch roofs
- A wobbly ladder
- Balance beams
- Clamber net
- Net bridge
- Rope walk
- Stainless steel slide
- Play hills with clamber bridge

The structure will be raised up to 1.8m high and will include a mix of height and difficulty to suit the older age group. Natural climbing fosters motor skill development, co-operation, problem-solving, physical challenge and risk management.

We build with robinia which is a hard wood and has been responsibly sourced.

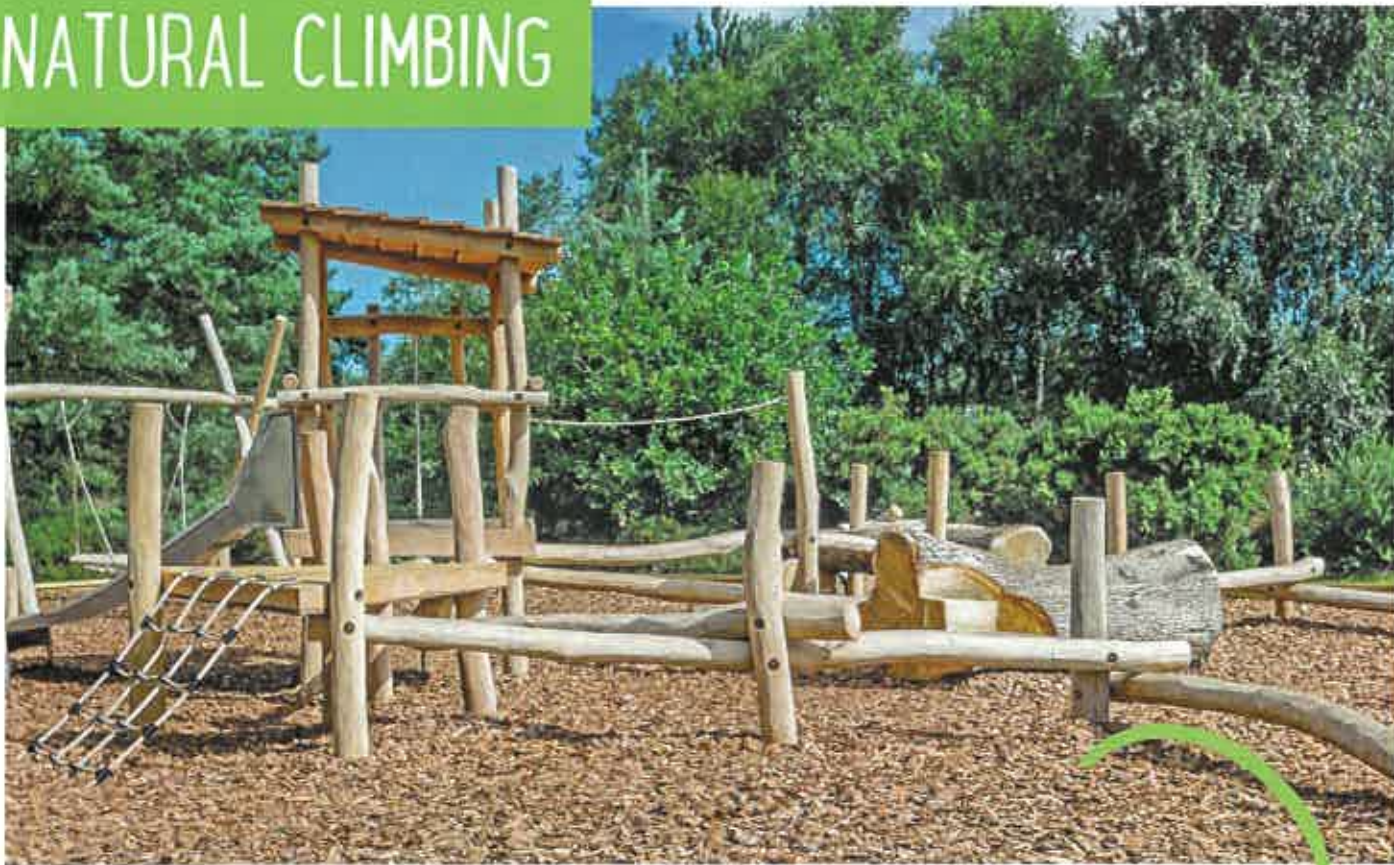


Balance beams / ropewalk



Clamber bridge

# NATURAL CLIMBING



Tower with fireman's pole



Tower and social slide

## Climbing Structure for Younger Children

The natural shapes of robinia trunks and branches will create a unique structure featuring:

- Tower with larch roof
- Oak pieces with carved steps (bark removed)
- Fireman's pole
- Clamber net
- Balance beams with overhead ropes
- Triangular platform
- A stainless steel social slide
- Carved monkey

The structure will be raised between 1m and 1.4m and will be suitable for the younger age group. Natural climbing fosters motor skill development, co-operation, problem-solving, physical challenge and risk management.

We build with robinia which is a hard wood and has been responsibly sourced.



Carved oak pieces

# SWINGS



Basket swing



Pendulum swing



# Pendulum Swing

An exciting rope swing suspended in an attractive robinia frame will be a great addition to your outdoor area, creating an exciting sensation that multiple children of all ages and abilities can enjoy, encouraging group and social play.

# Basket & Cradle Swing

A basket and cradle seat swing can be installed between two robinia posts, creating play experiences that children of varying ages can share.



# PLAY LANDSCAPING



Clamber bridge



Balance beam bridge



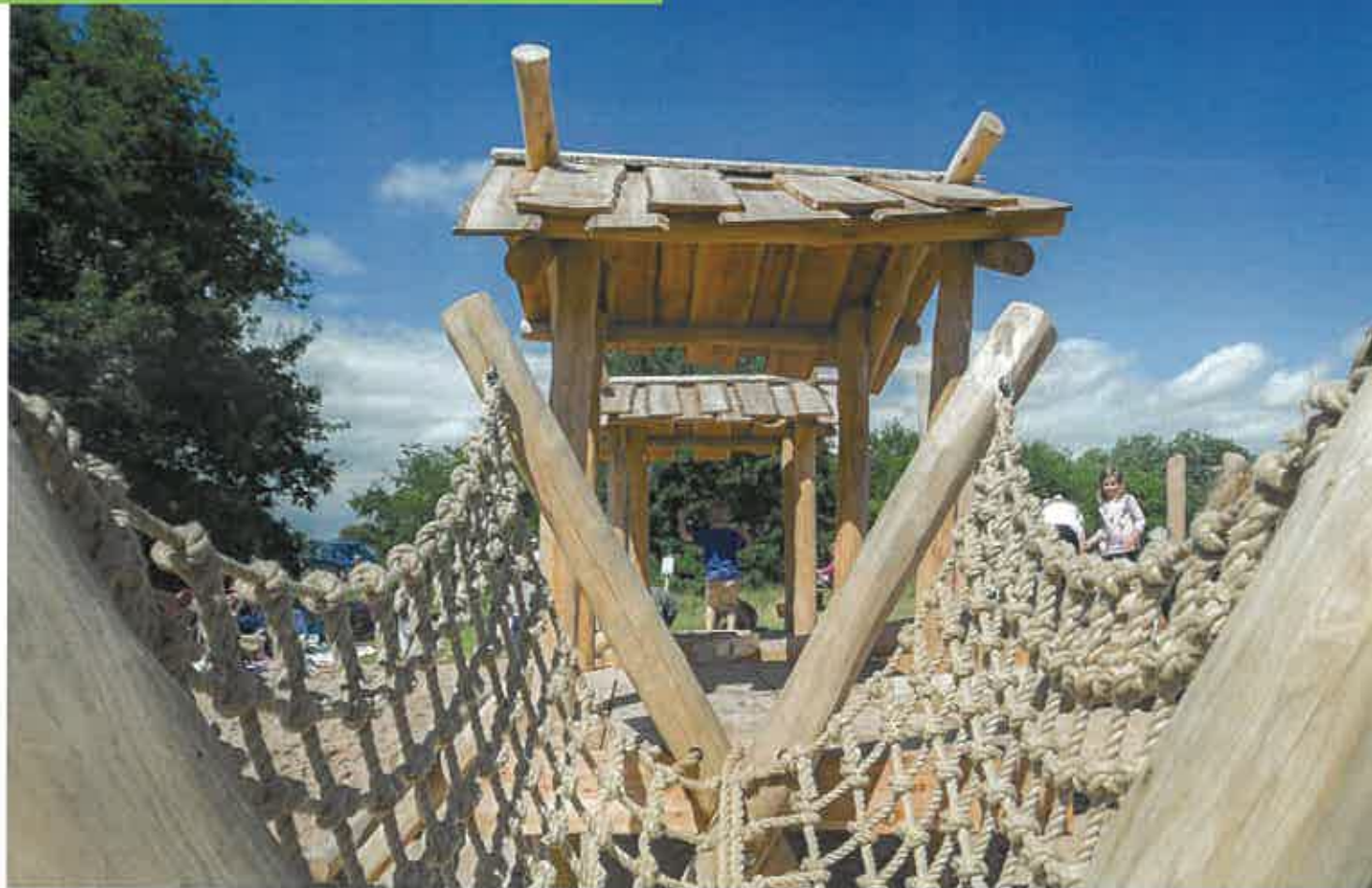
Social slide



# Hills

Landscaped play hills provide a space where children can clamber, roll, jump and climb whilst creating different levels and vantage points - they are the perfect environment for active learning and imaginative play. The hills can be turfed but we would recommend rubber mulch as a more durable and long lasting surface for high use areas.

## TOWER ROOF OPTIONS



## CANOPY DESIGN OPTIONS

We have created a choice of colourful designs that work wonderfully with our canopy roofs. Please let us know which design you would like on your canopy, if none is specified our Flora and Fauna design will be applied.



### FLORA & FAUNA

Featuring beautiful, colourful flowers, a range of leaves, mini beasts and berries. This is our most popular design and the one applied by default.

*Flora & Fauna will be applied to your canopy unless otherwise specified prior to confirmation.*



### SANDY BAY

'Sandy Bay' is particularly popular in Early Years or canopies that are close to sand pits/water play. Features include sand in a range of colours, colourful waves, seaweed and shells.

*\* The Sandy Bay design is an additional £150*



### BERRY & LEAVES

Our beautiful 'Berry & Leaves' design is included in the standard costs that you have been quoted. The design features a variety of leaves and berries and mini beasts can be added on request.



### PEA POD

The pea pod design features a range of grasses, berries, pea pods and mini beasts. It is popular for KS1 & KS2.



**MONO-PITCH LARCH ROOF**  
\*INCLUDED



**APEX LARCH ROOF**  
FROM £650



**MONO-PITCH CANOPY ROOF**  
FROM £1150

**SOMETHING EXTRA-SPECIAL...**  
Our artist led design team can create a wonderful bespoke design for you if you're looking for something extra-special. From £450

# BALANCE TRAIL



Balance beam with overhead rope

## Trim Trail

Trim trails present a sequence of climbing challenges, helping children to develop balance, strength, fitness and co-ordination.

Built with oak and robinia trunks and branches and treated timber, trim trails allow many children to play safely at once, including children of varying ages, physical abilities and confidence levels.

The trim trail will include:

- Clamber stilts
- Rope walks
- Monkey bars with monkey carving
- Balance beams with over head ropes
- Bird and animal carvings on posts



Monkey bars



Balance trail with mulch surfacing



Clamber stilts



Balance trail with carvings



Monkey bars



Rope walk



# CARVINGS

Our in-house chainsaw sculptor, Sandy can create a collection of carvings to relate to the menagerie history of the site. We can include animal and bird carvings on the roofs of the towers and on upright posts within the balance trail. A large monkey can be included within the younger children's climbing area and smaller monkey carvings will be included on the monkey bars within the balance trail.



Sandy carving the trout



Carved trout



Carved hippo

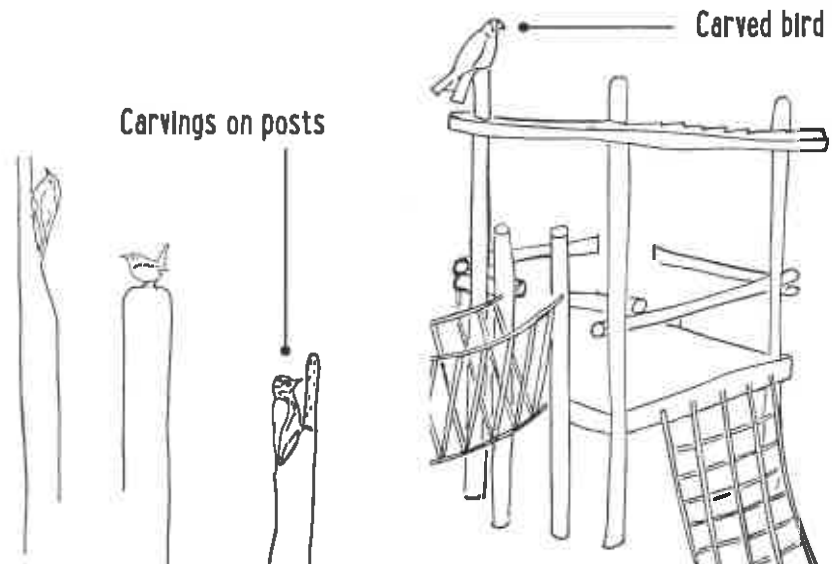


Monkey carving on posts of monkey bars

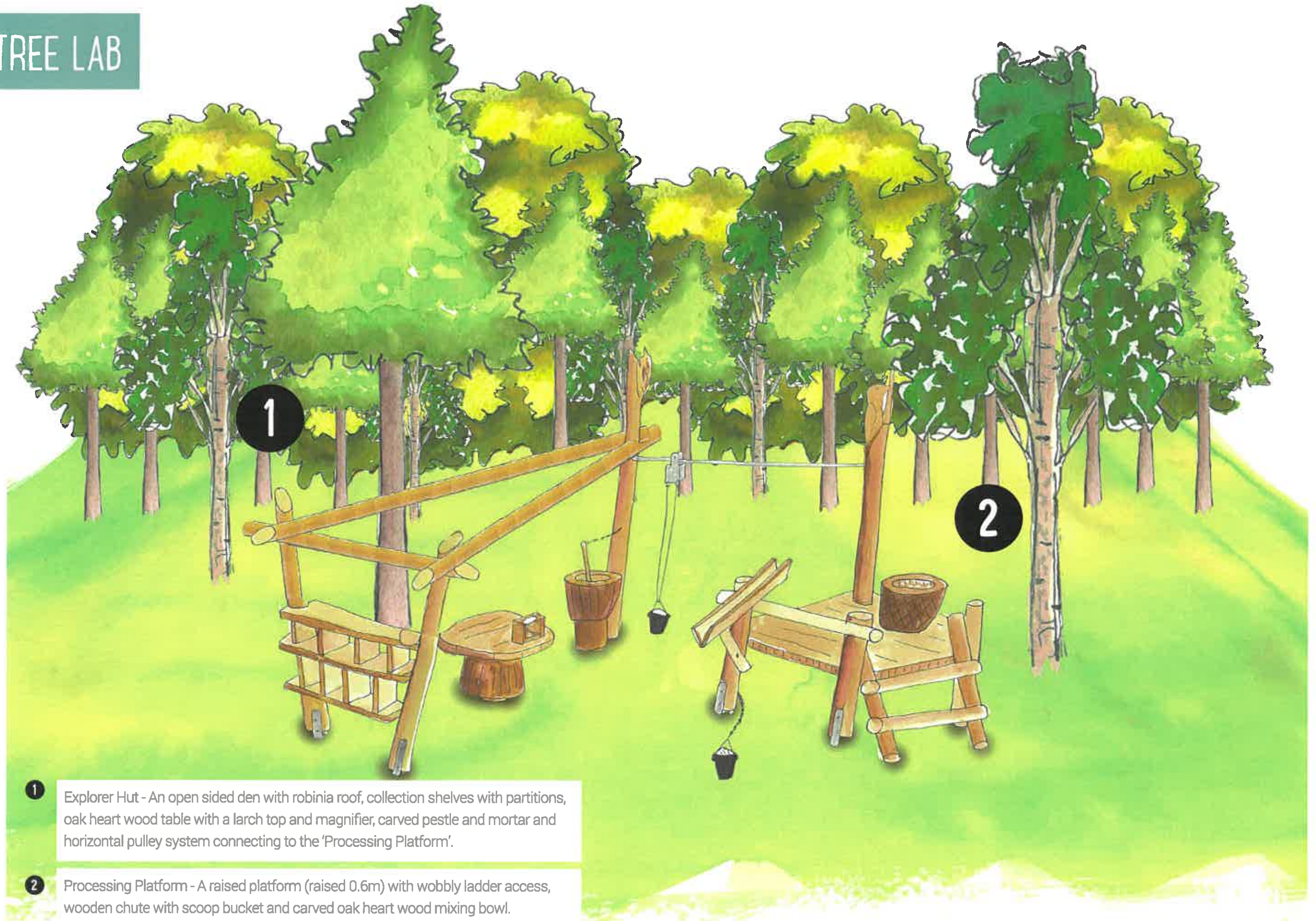
Large monkey carving approx 800mm high (younger children's area)



Carved owl



# TREE LAB



1 Explorer Hut - An open sided den with robinia roof, collection shelves with partitions, oak heart wood table with a larch top and magnifier, carved pestle and mortar and horizontal pulley system connecting to the 'Processing Platform'.

2 Processing Platform - A raised platform (raised 0.6m) with wobbly ladder access, wooden chute with scoop bucket and carved oak heart wood mixing bowl.

# TREE LAB

## Explorer Hut

- Attractive and eye-catching
- Creates a den space underneath to develop imaginative and role play skills

## PULLEY SYSTEM

- Co-operative play
- Social and communication skills
- Problem solving skills
- Transportation of materials
- Fine motor skills
- Links the 'Explorer Hut' to the 'Processing Platform'

## PROCESSING PLATFORM

- Gross motor skills
- Open-ended and imaginative play
- Social play
- Problem solving skills - "how do I get up there?"

Larch roof

Collect and sort shelves

Carvings

Horizontal pulley

Carved oak heart wood mixing bowl

Raised platform

Wobbly ladder

Wooden chute

Carved oak heart wood pestle and mortar

Rubber scoop bucket

Oak heart wood stump table with larch top

## COLLECT & SORT SHELVES

- Social and communication skill development as children work together to collect and arrange natural found materials
- Encourages exploration of surrounding area
- Memorable play experience
- Creative and open-ended play

# SURFACING

We offer various surfacing options for our higher elements, which have been carefully selected to ensure they can be subtly integrated into our natural play spaces whilst creating a safe surface for children's upward adventure. We comply with British Safety Standard BS EN 1177. Any fall height above 600mm requires safe surfacing, the size and depth of which depends on the fall height.

- 1-6.** Bonded rubber mulch from £65 per square metre available in a range of colours which can be used to create zones within play areas. **1.** Brown **2.** Red **3.** Green **4.** Red & brown mix **5.** Green & brown mix **6.** Red, green & brown mix
- 7.** Pebble: fall safe pebble £45 per sqm (plus triple round edging). Play pebbles (non-fall safe) £65 per sqm. (plus double edging)
- 8.** Sand: fall safe sand £45 per sqm (plus triple edging). Play sand (non-fall safe) £75 per sqm. (plus triple edging)
- 9.** Chip: play chip (non-fall safe) from £25 per sqm. (plus single edging). Fall safe play chip: £45per sqm. (plus double edging).
- 10.** Rubber grass matting

## Edging

Single timber round £25 per metre  
 Double timber round £40 per metre  
 Triple timber round £60 per metre





